



## Analysis & Reporting

Monitoring ecosystems; identifying pollution causes & impacts

Major issues over the last three months:

- **Cockle Survey 2011 results**
- **Know your river**
- **Eel passage through tidal barriers**
- **Salmon Action Plans**

### Cockle Survey 2011 results

Around 5,000 tonnes of takeable cockle are available from this years survey with the highest density on Salisbury, Caldy, South Salisbury and the adjacent new beds of, the Marsh and the No3/No.4 buoy. The amount available for fishing will depend on how much cockle is needed for over wintering oystercatchers and for recruitment and sustainability for the future.

### Know your river documents

The documents use the most recent data to provide catchment information on juvenile catches, rod catch, catch and release levels, and conservation limits. The documents available at the recent fish 2011 conference are now available on the internet at [www.cpwf.co.uk](http://www.cpwf.co.uk).



Title: Surveying Cockle densities



Title: Barriers to Eel migration

### Eel passage through tidal barriers

On many of the tributaries in the tidal estuaries there are tidal flaps to stop flooding. These prevent eel access and minimise the habitat available to eels. We are currently working with the flood defence team to look at their structures to prioritise improvement works. Eel access will also need to be provided on all current refurbishment works on tidal defences. This will be a complex issue as there needs to be an equilibrium between access and minimising the chance of flooding.

### Salmon Action Plans (SAP)

New draft SAP's have been produced for the Conwy and Dyfi. These documents are far more slimmed down compared to historic ones. These have been forwarded to the treasurers of the relevant clubs for comment.

For more information contact:

Name	<b>Bob Edwards</b>	Job	<b>Analysis &amp; Reporting Team Leader</b>
Tel	<b>01248 484010</b>	E-mail	<b>Bob.Edwards@environment-agency.gov.uk</b>



## Environmental Crime

Reducing illegal fisheries and waste activities in North Wales.

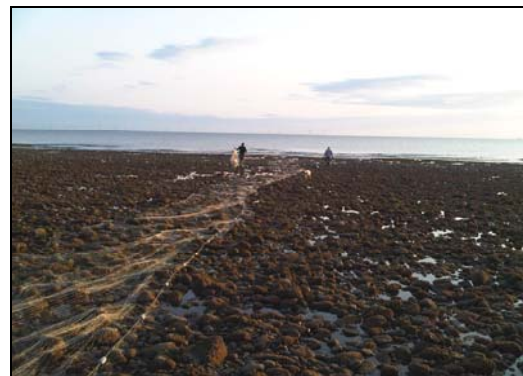
Major issues over the last three months:

- **Illegal Netting**
- **Rod Licence Checks**

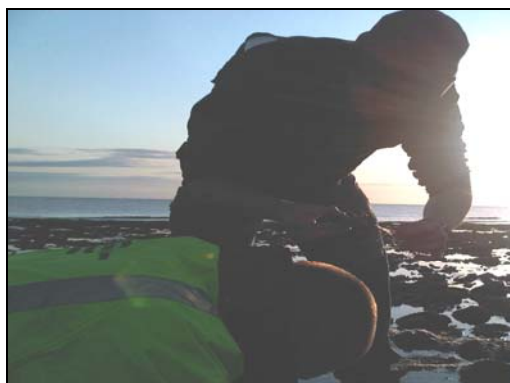
### Illegal Coastal Netting

In April following a report from a member of the public a male was apprehended for netting illegally in the Menai Straits. The net and fish were seized by Environmental Crime officers and the male was reported for fisheries offences.

In May officers acting on information from the public carried out an operation on an illegal net set on the Conwy coastline. The officers apprehended two males and seized the net and fish. This operation was carried out with support from North Wales Police.



**Title: Officers seizing an illegal net**



**Title: Officers checking an illegal net**

### Rod Licence checks

During the rod licence blitz weekend over the April bank holiday we checked 310 anglers and our evasion rate was 10%. Following this we have targeted the high evasion waters and through regular high impact patrols have reduced rod licence evasion to 3%. We will continue to target these areas over the summer months to drive down the evasion rates. Enforcement action is pending against 36 anglers for fishing without a licence.

For more information contact:

<b>Name</b>	<b>Jason Westerberg-Liptrot</b>	<b>Job Title</b>	<b>Team Leader</b>
<b>Tel</b>	<b>01248 484090</b>	<b>Email</b>	<b>Jason.liptrot@environment-agency.gov.uk</b>



# Technical Fisheries

## Maintaining and improving fisheries

### Major issues over the last three months

- Final round of funding through WFW open for Expressions of Interest
- Clwyd fish pass improvements started
- Fish 2011 conference

### Wild Fishing Wales

The final round of funding is open for Expressions of Interest until the 14<sup>th</sup> July. Projects must have elements of both access and habitat, and be within the convergence area of Wales. WFW would fund 80% of a projects costs, with the remaining 20% from the applicant. For further information please contact Joel Rees-Jones: 07776 474308 or [joel.rees-jones@environment-agency.wales.gov.uk](mailto:joel.rees-jones@environment-agency.wales.gov.uk)

Wild Fishing Wales is an Environment Agency Wales initiative part-funded by the European Regional Development Fund through the Welsh Assembly Government and a component element of the Countryside Council for Wales' Communities and Nature strategic project



**Title: New bridge on the Afon Dwyfor**



**Title: Rocky ramp fish pass construction**

### Clwyd fish pass improvements started

Construction has started on the fish pass improvements at Rhewl on the River Clywedog. The existing pool and weir fish pass was creating a barrier to fish. It has now been demolished and installation of the new natural fish way has begun as part of the Salmon for Tomorrow project.

### Caergwrle fish pass

As part of the Salmon for Tomorrow project, work has begun on the installation of a Larinier fish pass at Caergwrle weir on the River Alyn on the Dee. The fish pass will deepen and slow the water down, improving access to over 20km of spawning and nursery habitat for fish

**For further information contact:**

<b>Name</b>	<b>Julian Bray</b>	<b>Job Title</b>	<b>Team Leader Technical Fisheries</b>
<b>Tel</b>	<b>01248 484085</b>	<b>Email</b>	<b>Julian.Bray@environment-agency.gov.uk</b>



## Technical Fisheries

### Maintaining and improving fisheries

#### Major issues over the last three months:

- **Dyfi Forestry buffer strip development**
- **Glyserch habitat work completed**
- **Afon Brenig habitat scheme**
- **Afom Merddwr willow spiling**

#### **Dyfi forestry buffer strips development**

During partnership projects with Forestry Commission Wales, approximately 23km of forestry buffer strips were created from 2004 to 2009. Re-visiting these sites, the buffer strips have developed very good re-growth of deciduous species, opening up the streams, creating diverse buffer strips and improving the habitat for fish.

#### **Glyserch habitat work completed**

A habitat scheme has been completed on the Glyserch a Dyfi tributary. The site was identified as being overgrazed with erosion problems. The aim of the work was to save as much as possible of the tree root systems, stop overgrazing near the waters edge and introduce woody debris.



**Title: Dyfi forestry buffer strips seven years on**



**Title: Afon Brenig Instream Habitat**

#### **Afon Brenig habitat scheme**

A degraded section of the Afon Brenig below the reservoir was recently fenced off and large boulders were introduced in stream to create habitat for fish. Woody debris was also introduced into the section to create additional fish habitat.

#### **Afom Merddwr willow spiling**

Local contractor Craig Evans constructed a new twenty metre section of willow spiling on the Afon Merddwr during April 2011. The willow coppiced and used was from an area nearby. This work is an extension of the existing willow spiling scheme which was completed in 2004. The willow provides stability to river banks which would have eroded and when established it will provide food and cover for juvenile salmon and trout and habitat for small mammals.

#### For further information contact:

<b>Name</b>	<b>Julian Bray</b>	<b>Job Title</b>	<b>Team Leader Technical Fisheries</b>
<b>Tel</b>	<b>01248 484085</b>	<b>Email</b>	<b>Julian.Bray@environment-agency.gov.uk</b>



# Technical Fisheries

## Maintaining and improving fisheries

### Major issues over the last three months:

- **Prysor AA Wild Fishing Wales Scheme**
- **Seiont mitigation salmon stocking**

### Prysor AA Wild Fishing Wales scheme

Habitat and access work on the Afon Eden, Prysor and Crawcwellt has been finished. Wheelchair access is now available on the Afon Prysor. For tickets and details please contact [Fisher@trawslake.com](mailto:Fisher@trawslake.com) or 07527 386738

Wild Fishing Wales is an Environment Agency Wales initiative part-funded by the European Regional Development Fund through the Welsh Assembly Government and a component element of the Countryside Council for Wales' Communities and Nature strategic project"



Cymunedau a Natur  
Communities and Nature



WILD FISHING  
WALES  
PYSGOTA  
GWYLLT  
CYMRU



Ewrop & Chymru: Buddsoddi yn eich Dyfodol  
Cronfa Datblygu Rhanbarthol Ewrop  
Europe & Wales: Investing in your Future  
European Regional Development Fund



Title: Fishermens car park on the Afon Eden



Title: Seiont mitigation salmon stocking

### Local fishery netted

The fisheries team carried out a netting operation to aid a local fishery that was overrun by small silver fish: these fish were donated to a community fishing club. The receiving water has reported increased catches and it will hopefully help increase the number of people taking up the sport in the area.

### Seiont mitigation salmon stocking

Nine Thousand salmon fed fry were stocked out on the upper Seiont in the rivers Arddu and Hwch as part of the Llyn Padarn Hydropower compensation agreement. The fry were collected as ova from angler-caught fish and reared at Mawddach Hatchery. The Seiont, Gwryfai and Llyfni angling club members assisted with the stocking programme.

### For further information contact:

Name	<b>Julian Bray</b>	Job Title	<b>Team Leader Technical Fisheries</b>
Tel	<b>01248 484085</b>	Email	<b>Julian.Bray@environment-agency.gov.uk</b>



## Fish Culture

### Mitigating damage to fisheries

#### Major issues over the last three months:

- Arctic Charr hatch and feed at Mawddach and Maerdy.
- Dee freshwater pearl mussel glochidia collected.
- Fin clipping and stocking of Maerdy fish

#### Arctic Charr

In December 2010 13,000 Arctic Charr ova were laid down at Mawddach and Maerdy hatcheries. Just over 10,000 of these have been successfully brought onto feed. This year a specialist marine diet used for turbot and halibut culture has been used. 5,000 of these fish will be stocked out as fry this summer, and the remaining 5,000 as parr in the Autumn.

#### Freshwater pearl mussel glochidia

Thousands of Dee freshwater pearl mussel glochidia have been collected at Mawddach hatchery. These glochidia have been attached to the gills of 500 juvenile Dee salmon for the last nine months. The glochidia when collected only measure 200 microns. They are collected in special 150 micron baskets which are placed on the outflow of the fish tanks containing the fish infected with the glochidia.



Title: Freshwater pearl mussel Glochidia



Title: Fin clipping at Maerdy

#### Fin clipping and stocking of Maerdy fish

In May 5 members of the Bangor Sampling and Collection team helped to fin clip 25,000 0+ parr over a 2 day period. Clipping the adipose fin of the fish allows them to be easily identified as hatchery fish, if caught when they return as adults. The clipped fish were then stocked into the Tryweryn fish trap below the Celyn damn, where Aquamats and clay pipes have recently been installed to improve the habitat in the trap to help the 0+ parr naturalise before being released into the Tryweryn.

#### For more information contact:

Name	Keith Scriven	Job Title	Technical Specialist – Fish culture
Tel	07917072573	Email	keith.scrivens@environment-agency.gov.uk