

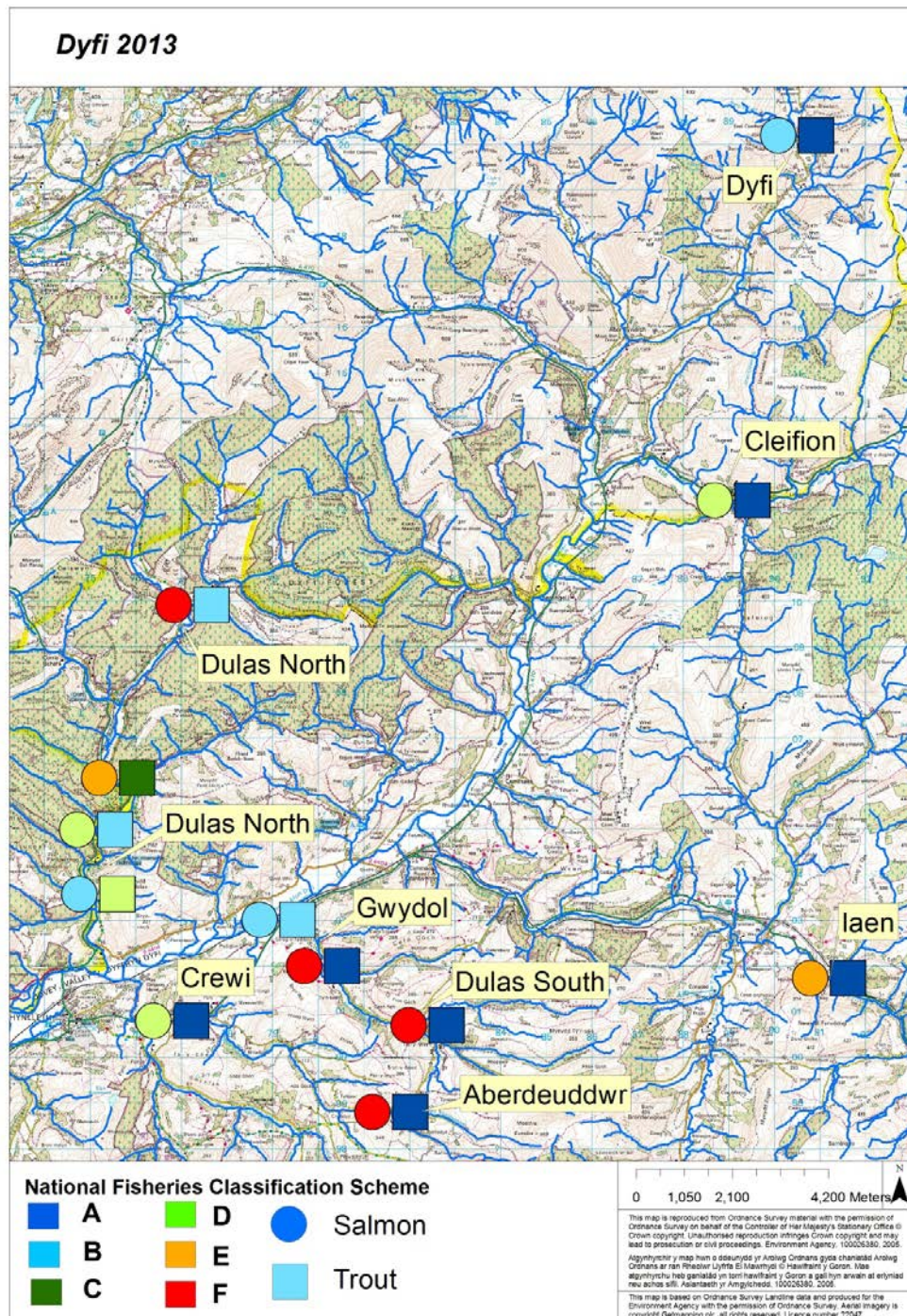
KNOW YOUR RIVER

2013 Dyfi Summary

The following is a summary of the fish stocks in the Dyfi catchment for 2013.

Juvenile monitoring

The map shows a snapshot of the 2013 juvenile salmonid populations measured by electro-fishing surveys.



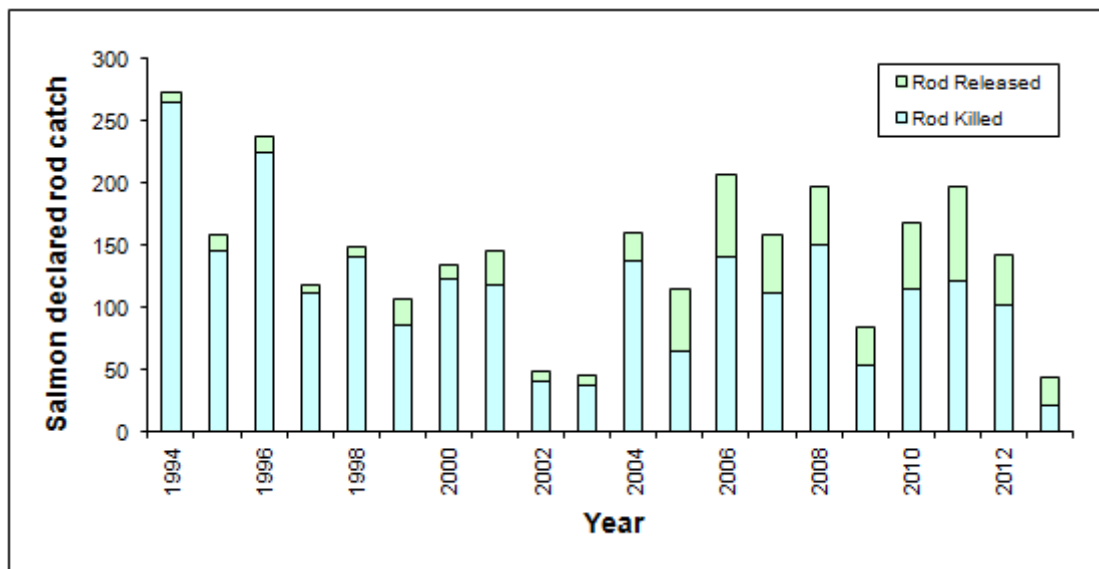
KNOW YOUR RIVER

2013 Dyfi Summary

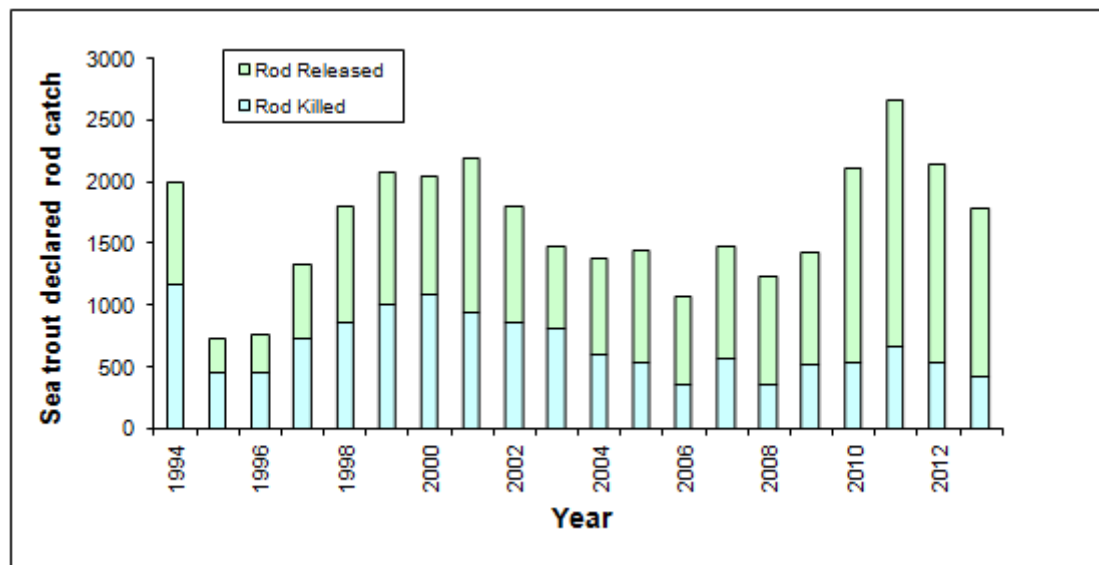
Catch returns / catch & release

The graphs show the rod catch and catch & release rate for salmon and sea trout on the Dwyfor.

Salmon rod catch – release rate in 2013 was 52%. This is better than in previous years but needs to continue to improve to conserve stocks. The North Wales average is 55%.



Sea trout rod catch– release rate in 2013 was 76%. This is good and needs to be maintained and improved to conserve stocks. The North Wales average is 72%.

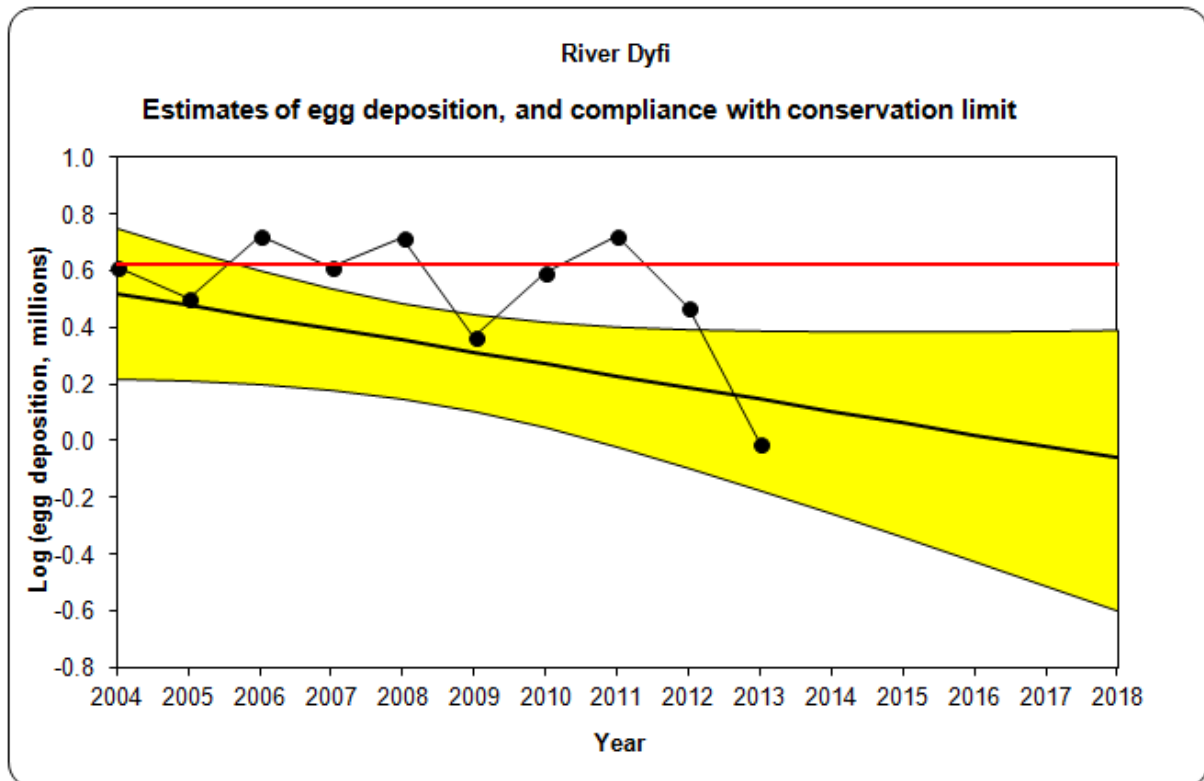


KNOW YOUR RIVER

2013 Dyfi Summary

Conservation of Salmon

Conservation limit for sustainable fish population



Are enough salmon eggs being deposited to conserve salmon stocks in the catchment?

The red line represents the number of eggs required to be deposited to sustain a healthy salmon stock.

- Current number of eggs being deposited puts stocks **at risk**
- In 5 years time the predicted status of salmon stocks will be **at risk**
- Based on current and future trends the stocks of salmon will continue to **decline**

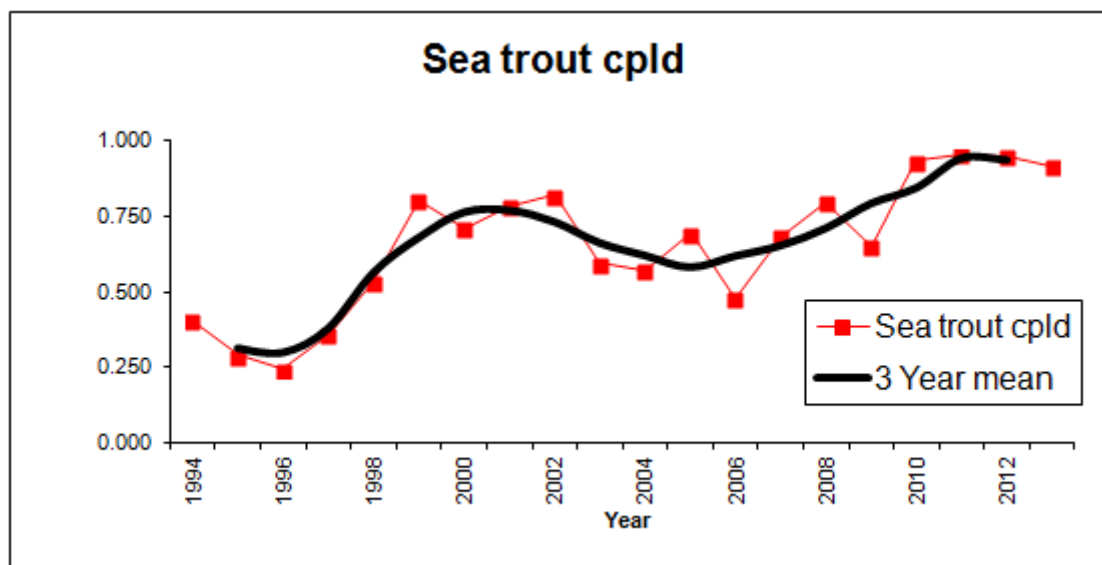
KNOW YOUR RIVER

2013 Dyfi Summary

Conservation of Sea Trout

This approach to assessing sea trout stock performance is still under development. It gives an early warning about potential problems and assists Areas with considering whether any further management action including exploitation controls are required. It is based on catch trends in the last three years compared with those in the previous ten.

Catch Per License Day (CPLD) gives you the catch per outing. This is calculated according to data supplied by anglers on the catchment.



- The latest 10-year trend in CPLD on the Dyfi is **improving** and this is a statistically significant trend
- Average CPLD for the most recent 3-year period is in the upper (80%) of the range of CPLD figures reported in the previous 10-years
- Combining the above measures, the Dyfi is classified as **“not at risk”**; i.e. the fishery appears to be performing well – indicating a healthy adult stock