



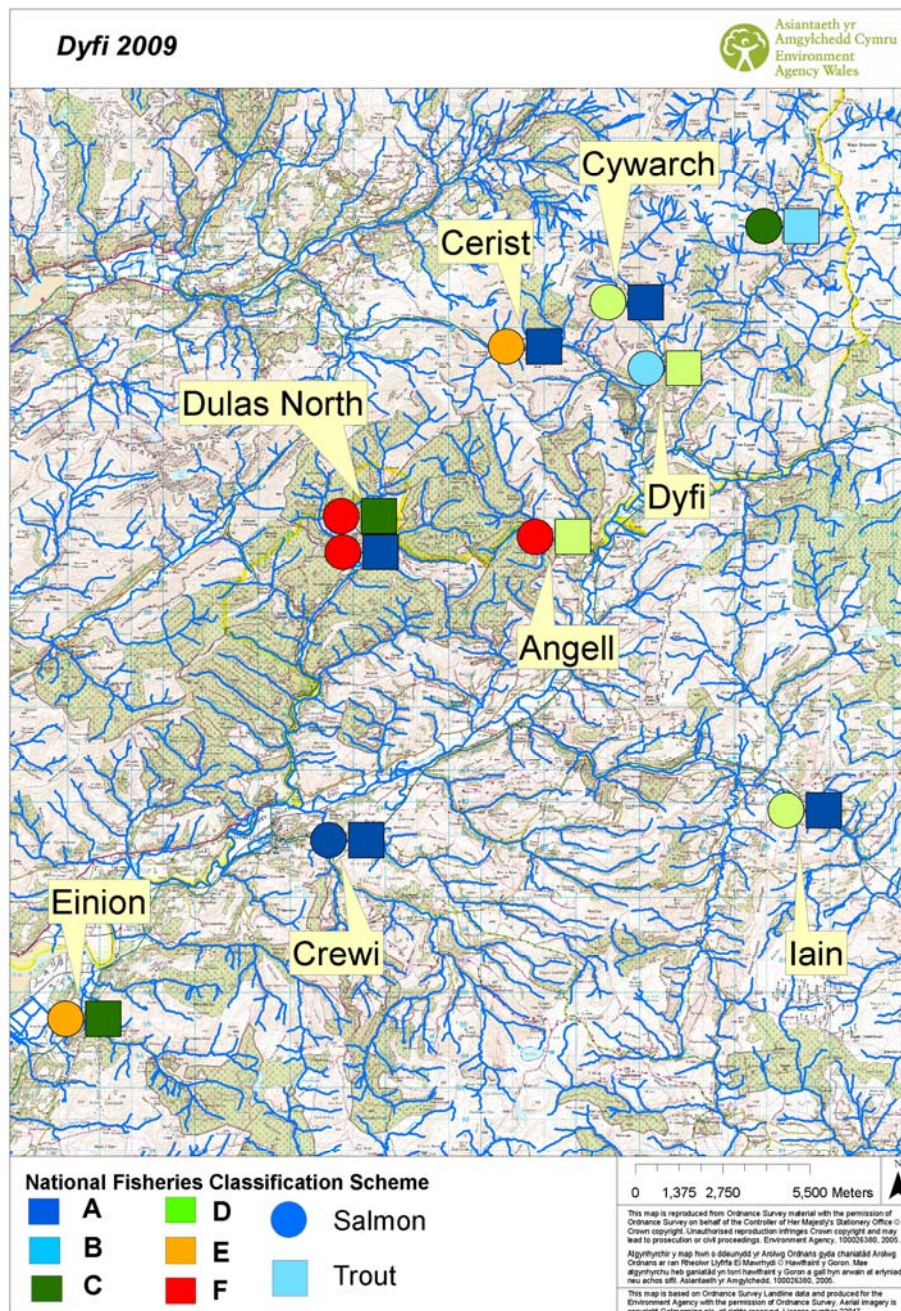
KNOW YOUR RIVER

2009 Dyfi summary

The following is a summary of the fish stocks in the Dyfi catchment for 2009.

Juvenile monitoring

The map shows a snapshot of the 2009 juvenile salmonid populations measured by electro-fishing surveys.



llinell gwasanethu cwsmeriaid

customer service line

08708 506 506

www.asiantaeth-amgylchedd.cymru.gov.uk

llinell argyfwng

incident hotline

0800 80 70 60

www.environment-agency.wales.gov.uk

floodline

08456 988 1188



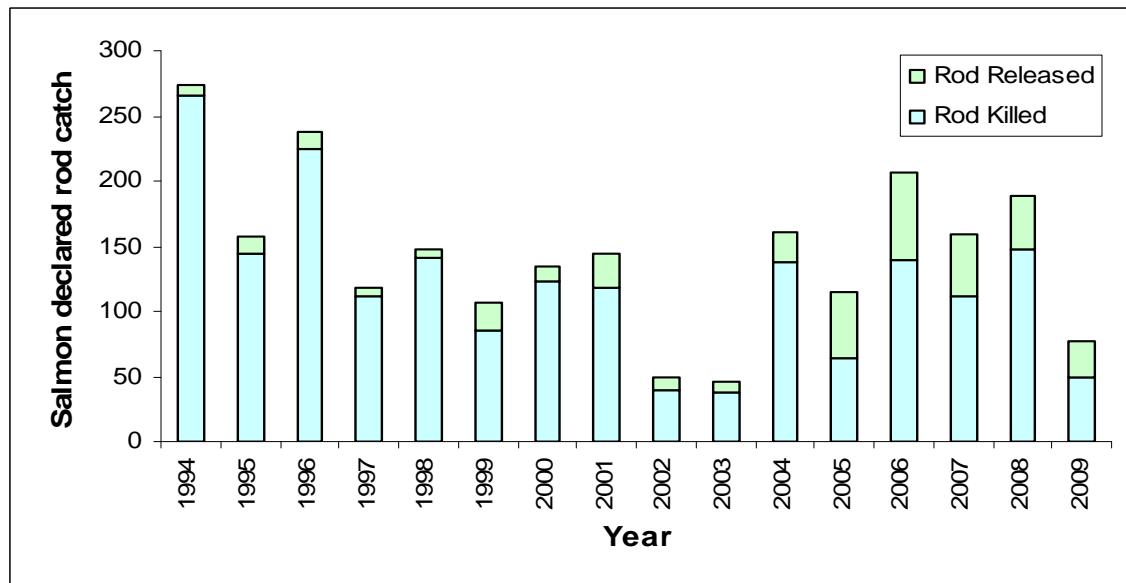
KNOW YOUR RIVER

2009 Dyfi summary

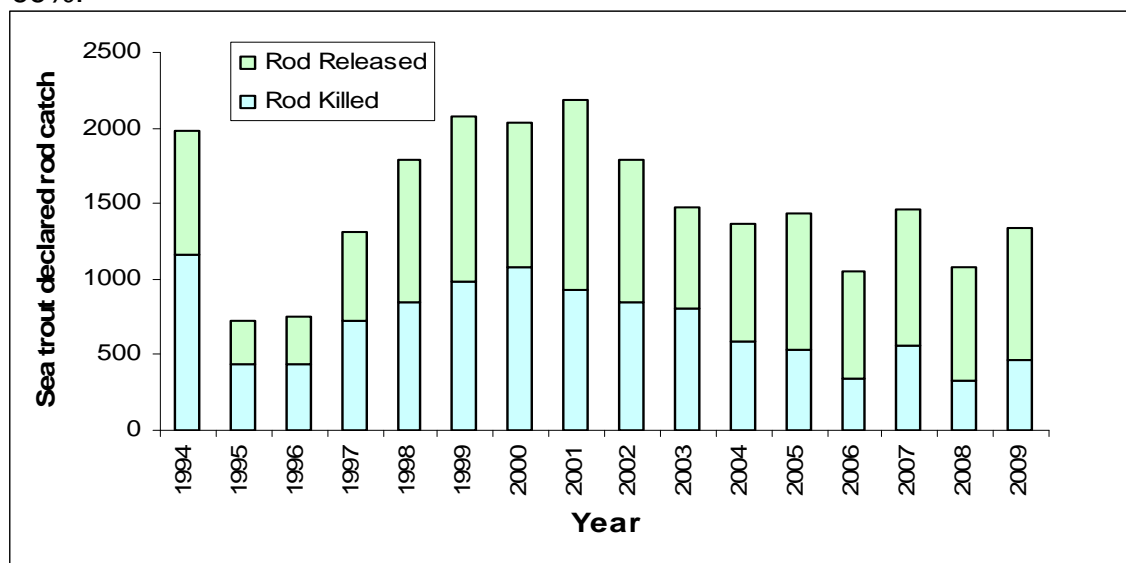
Catch returns / catch & release

The graphs show the rod catch and catch & release rate for salmon and sea trout on the Dwyfor.

Salmon rod catch – release rate in 2009 was 37%. This is below average and needs to be improved to conserve stocks. The North Wales average is 41%.



Sea trout rod catch– release rate in 2009 was 64%. This is below average and needs to be improved to conserve stocks. The North Wales average is 66%.



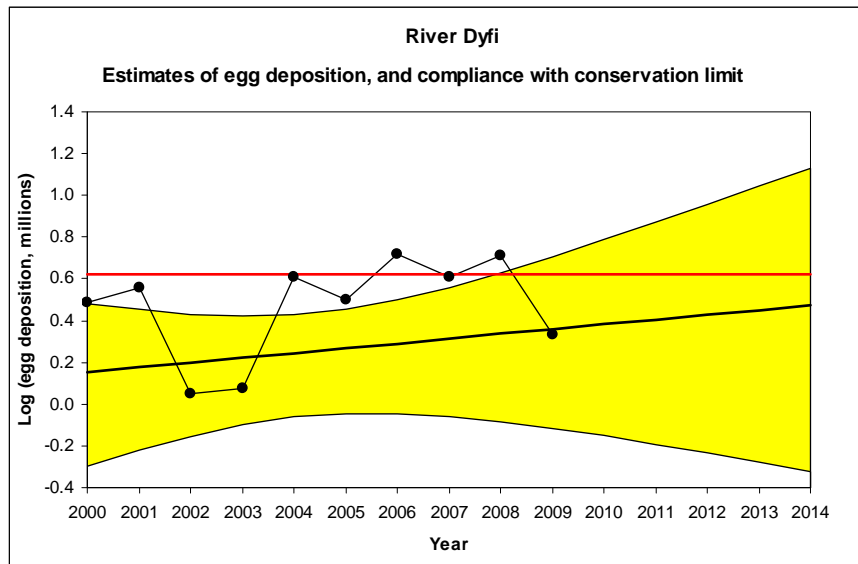


KNOW YOUR RIVER

2009 Dyfi summary

Conservation of Salmon

Conservation limit for sustainable fish population



Are enough salmon eggs being deposited to conserve salmon stocks in the catchment?

The red line represents the number of eggs required to be deposited to sustain a healthy salmon stock.

- Current number of eggs being deposited puts stocks **probably at risk**.
- In 5 years time the predicted status of salmon stocks will be **probably at risk**
- Based on current and future trends the stocks of salmon will continue to **improve**.

Note: this method of stock assessment is currently under review and will change in 2011 due to a changes in effort.



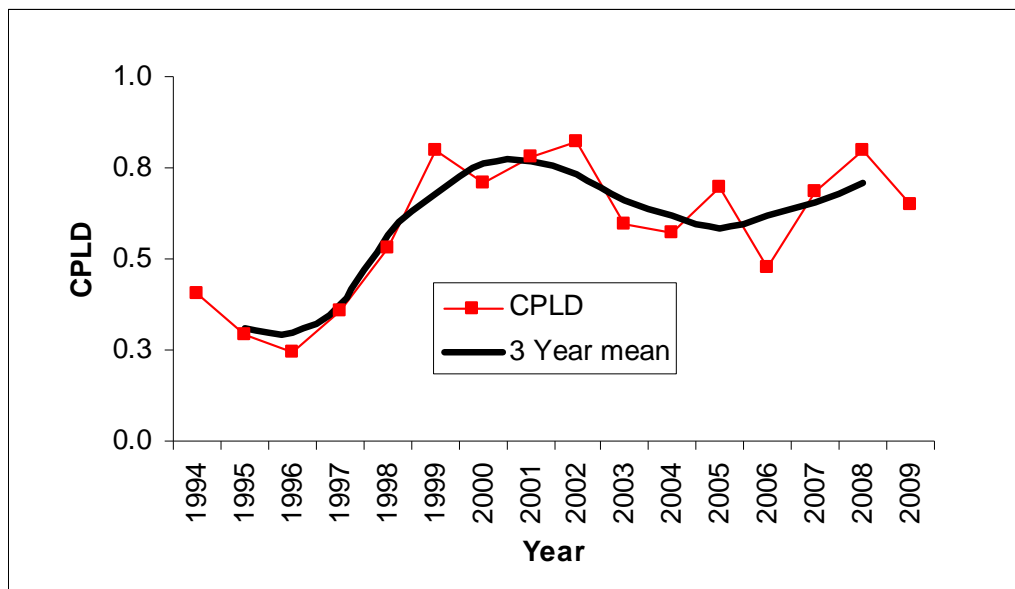
KNOW YOUR RIVER

2009 Dyfi summary

Conservation of Sea Trout

This approach to assessing sea trout stock performance is still under development. It gives an early warning about potential problems and assists Areas with considering whether any further management action including exploitation controls are required. It is based on catch trends in the last three years compared with those in the previous ten.

Catch Per License Day (CPLD) gives you the catch per outing. This is calculated according to data supplied by anglers on the catchment.



- **CPUE** - on the Dyfi is **stable**.
- **Stock status** – this is comparing catches when they were at there best. Status is **currently between 50 – 80%** of this.
- **Score** – this gives a score from the CPUE and stock status. The Dyfi scores 3, this is **probably not at risk**.



KNOW YOUR RIVER

2009 Dyfi summary

Salmon Action Plan (SAP) Activities

We plan to complete a SAP review for the Dyfi 2010/11. The following work has been carried out on the catchment.

Activity	Action
Activities that have occurred on the catchment	
Water quality work.	Bathing water driven sampling and diffuse pollution work .
Dylife metal mines.	Looking at the effects of the metal mines in the Dylife and other tributaries.
Sheep dip.	Sampling carried out on the Twymyn – no issues found.
Habitat work.	Carried out on the Ceirig – Buffer strip.