



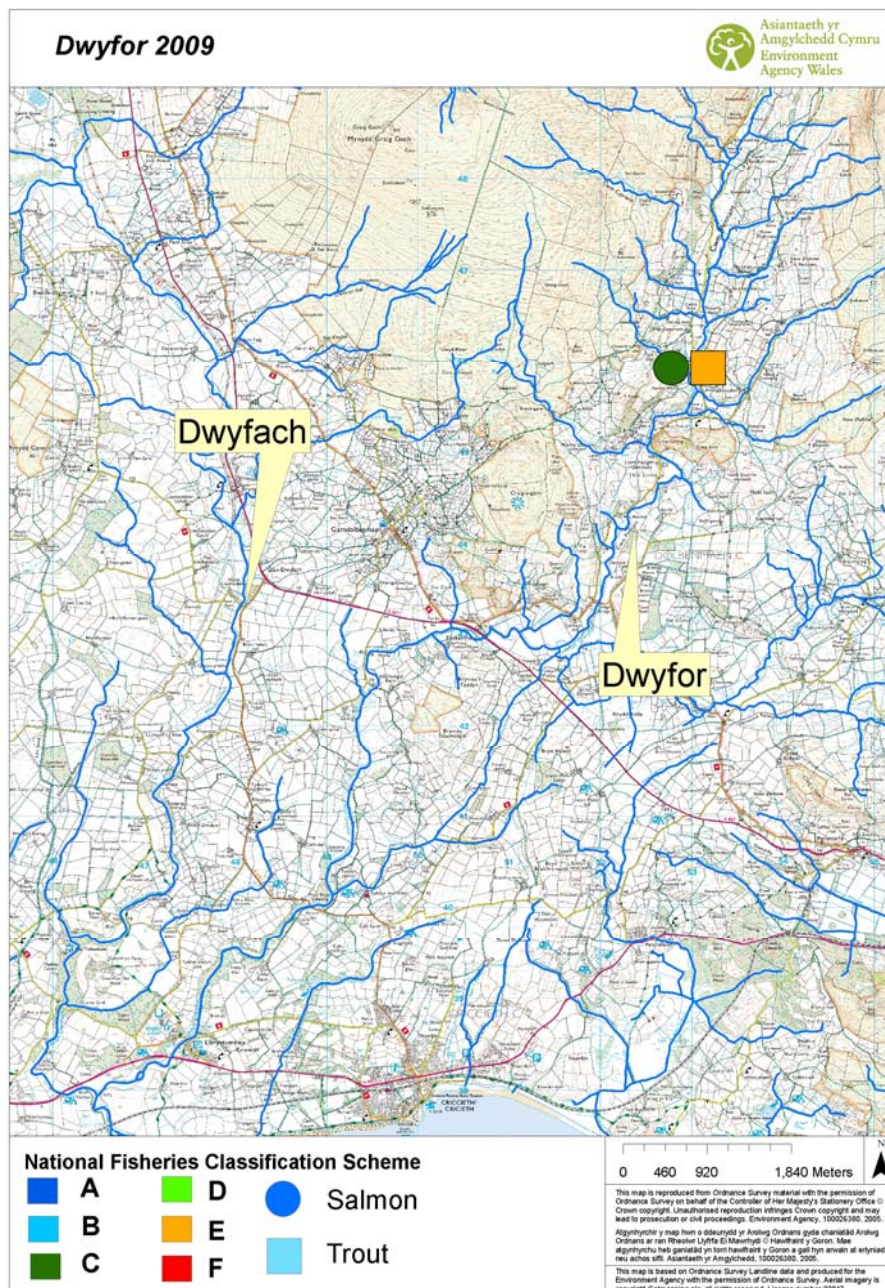
KNOW YOUR RIVER

2009 Dwyfor summary

The following is a summary of the fish stocks in the Dwyfor catchment for 2009.

Juvenile monitoring

The map shows a snapshot of the 2009 juvenile salmonid populations measured by electro-fishing surveys.



llinell gwasanethu cwsmeriaid

customer service line

08708 506 506

www.asiantaeth-amgylchedd.cymru.gov.uk

llinell argyfwng

incident hotline

0800 80 70 60

www.environment-agency.wales.gov.uk

floodline

08456 988 1188



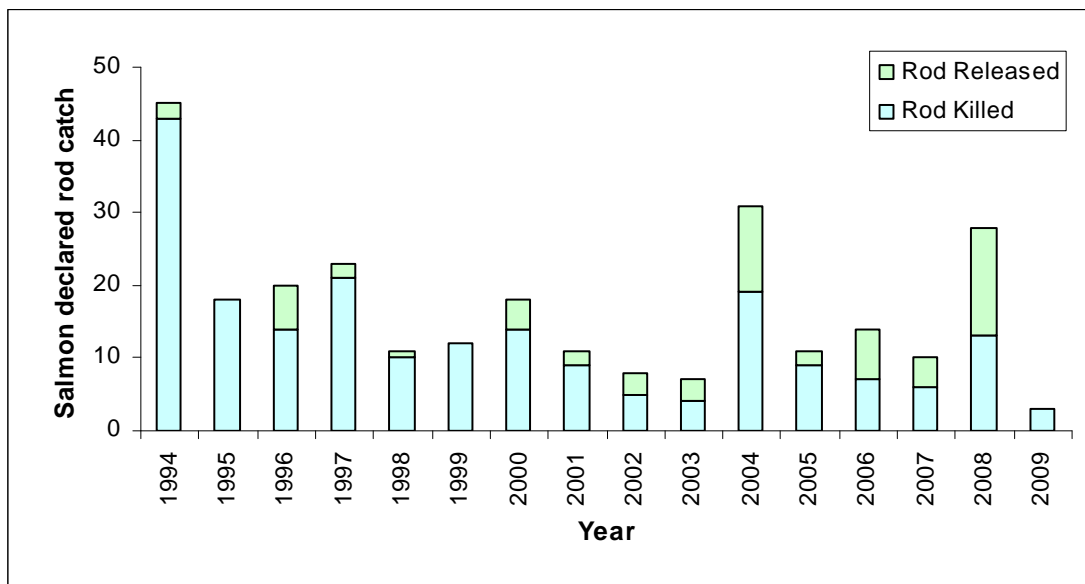
KNOW YOUR RIVER

2009 Dwyfor summary

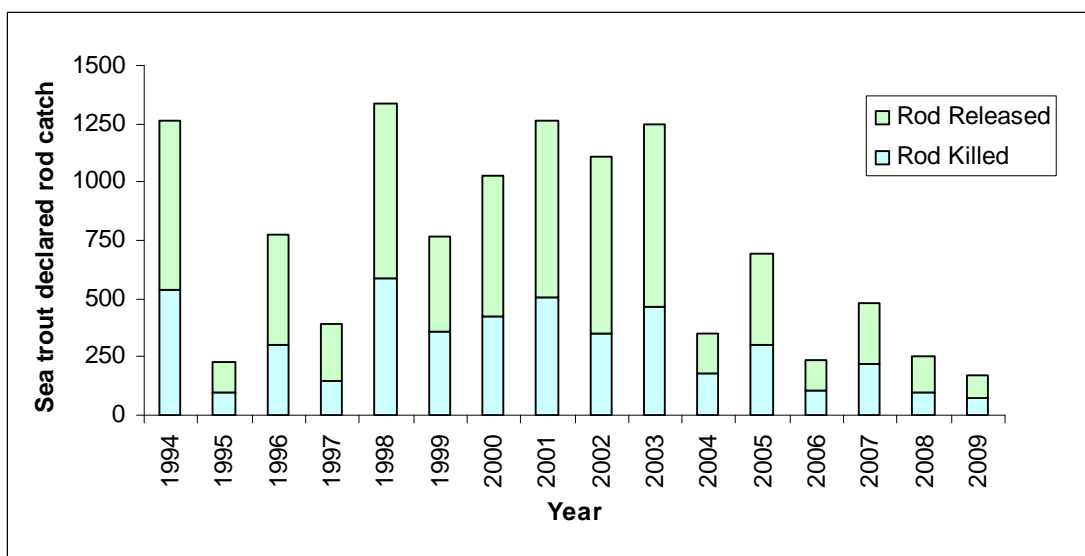
Catch returns / catch & release

The graphs show the rod catch and catch & release rate for salmon and sea trout on the Dwyfor.

Salmon rod catch – release rate in 2009 was 0%. This is very poor and needs to be improved to conserve stocks. The North Wales average is 41%.



Sea trout rod catch – release rate in 2009 was 59%. This is below average and needs to be improved to conserve stocks. The North Wales average is 66%.



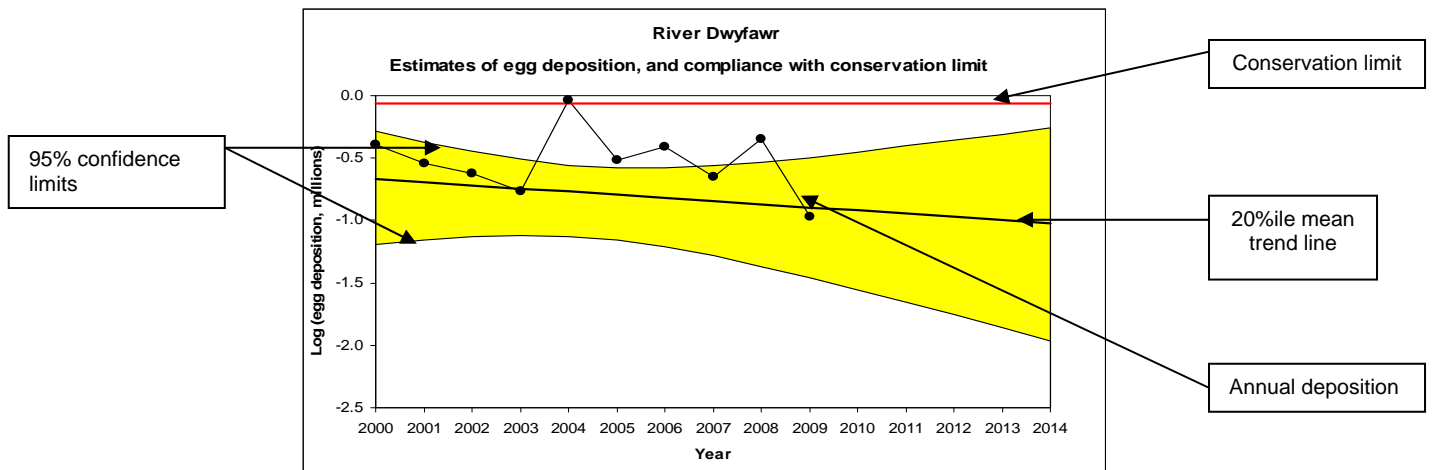


KNOW YOUR RIVER

2009 Dwyfor summary

Conservation of Salmon

Conservation limit for sustainable fish population



Are enough salmon eggs being deposited to conserve salmon stocks in the catchment?

The red line represents the number of eggs required to be deposited to sustain a healthy salmon stock.

- Current number of eggs being deposited puts stocks **at risk**.
- In 5 years time the predicted status of salmon stocks will be **at risk**.
- Based on current and future trends the stocks of salmon will continue to **decline**.

Note: this method of stock assessment is currently under review and will change in 2011 due to a changes in effort.



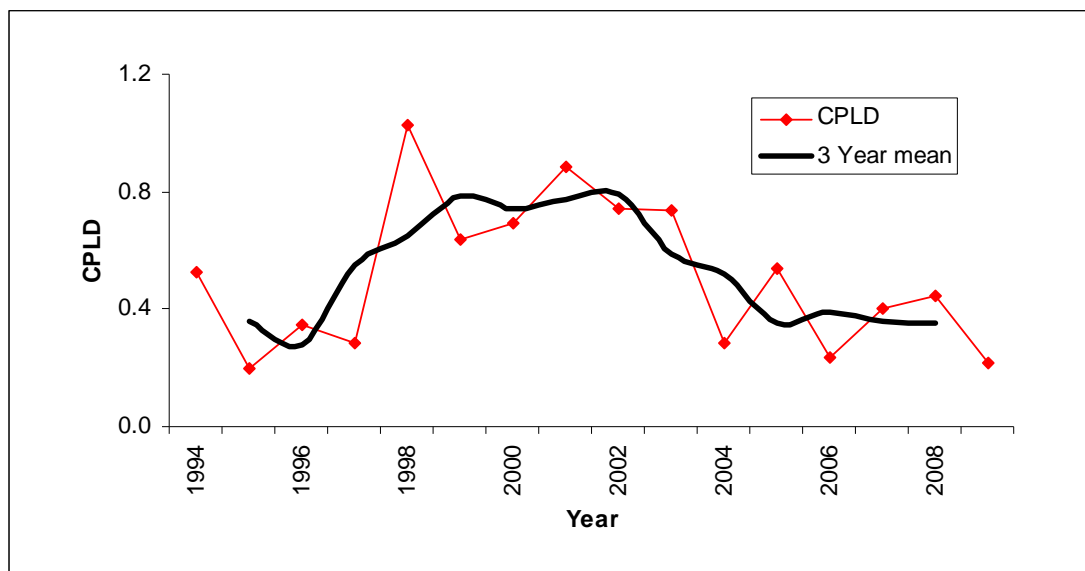
KNOW YOUR RIVER

2009 Dwyfor summary

Conservation of Sea Trout

This approach to assessing sea trout stock performance is still under development. It gives an early warning about potential problems and assists Areas with considering whether any further management action including exploitation controls are required. It is based on catch trends in the last three years compared with those in the previous ten.

Catch Per License Day (CPLD) gives you the catch per outing. This is calculated according to data supplied by anglers on the catchment.



- **CPUE** - on the Dwyfor is **decreasing**.
- **Stock status** – this is comparing catches when they were at there best. Status is **currently below 20%** of this.
- **Score** – this gives a score from the CPUE and stock status. The Dwyfor scores 1, this is **at risk**.



KNOW YOUR RIVER

2009 Dwyfor summary

Salmon Action Plan Activities

| Activity | Action |
|--|--|
| Activities that will occur with or without a River Basin Management Plan RBMP | |
| Pollution incidents. | Farm visits have been carried out on the catchment. |
| Investigate apparent decline in flylife identified by Anglers. | Environment Agency biology data shows there has been no decline. |
| Angler catch & release rates | The club needs to improve release rates due to falling stocks of salmon & sea trout. |
| Habitat improvement restoration. | Repair works carried out on the habitat sites. |
| Actions that will happen in the next few years | |
| Bird culling. | Angling association need to monitor the numbers and effect on the river. |
| Actions that may happen if we had more evidence | |
| Investigate acidification issues in Upper catchment. | Need more evidence of issue. |
| Investigate possible water quality issues within catchment – Dwyfach market, Holiday Parks and sewage/ waterworks outlets. | Need more evidence of issue. |
| Investigate Cwm Ciperwth Mine discharge. | Need more evidence of issue. |
| Investigate the effect of minor upland streams reducing irrigation/ land drainage to bog areas. | Need more evidence of issue. |