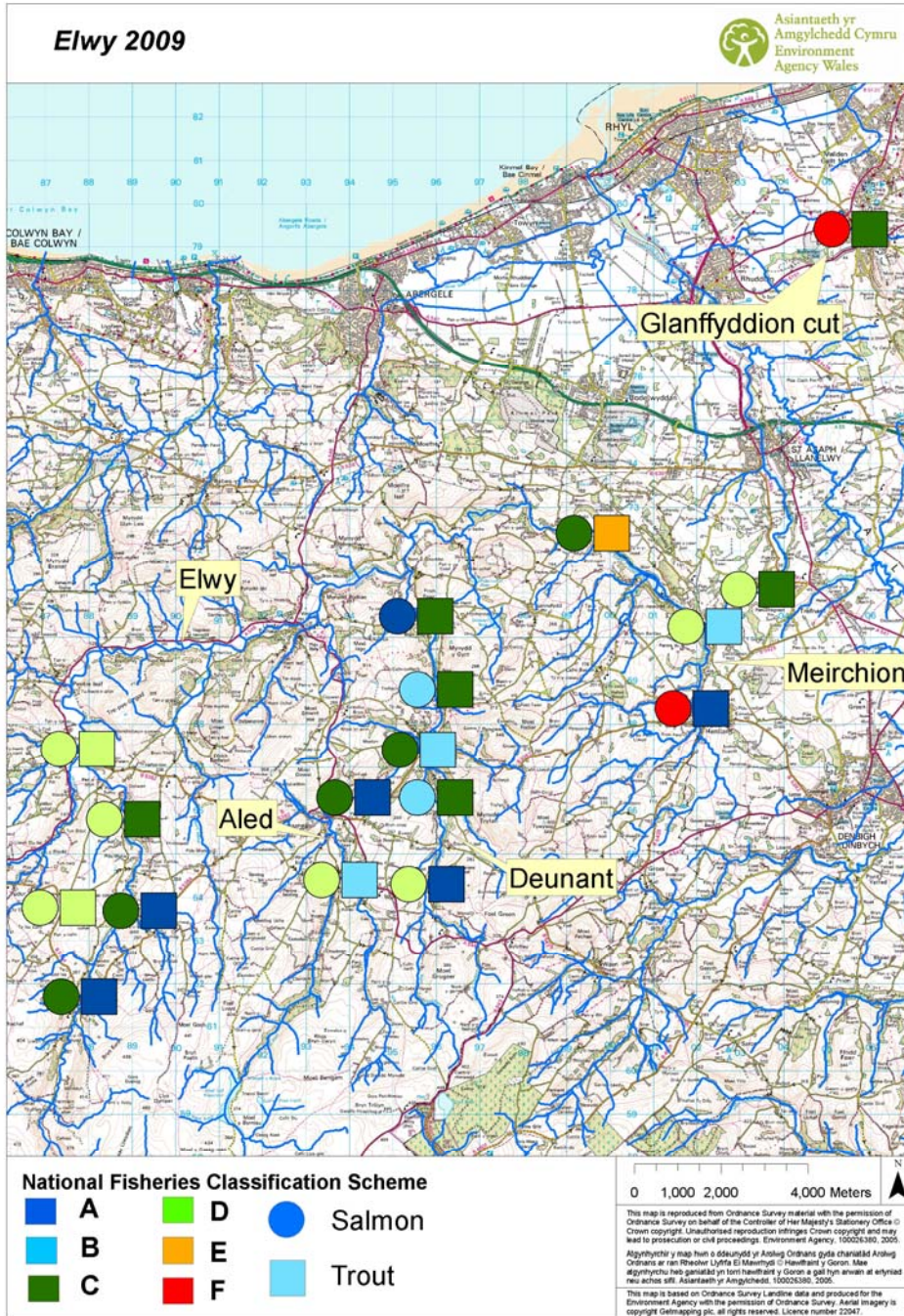






# KNOW YOUR RIVER

## 2009 Clwyd summary



llinell gwasanethu cwsmeriaid  
customer service line

08708 506 506

[www.asiantaeth-amgylchedd.cymru.gov.uk](http://www.asiantaeth-amgylchedd.cymru.gov.uk)

llinell argyfwng  
incident hotline

0800 80 70 60

[www.environment-agency.wales.gov.uk](http://www.environment-agency.wales.gov.uk)

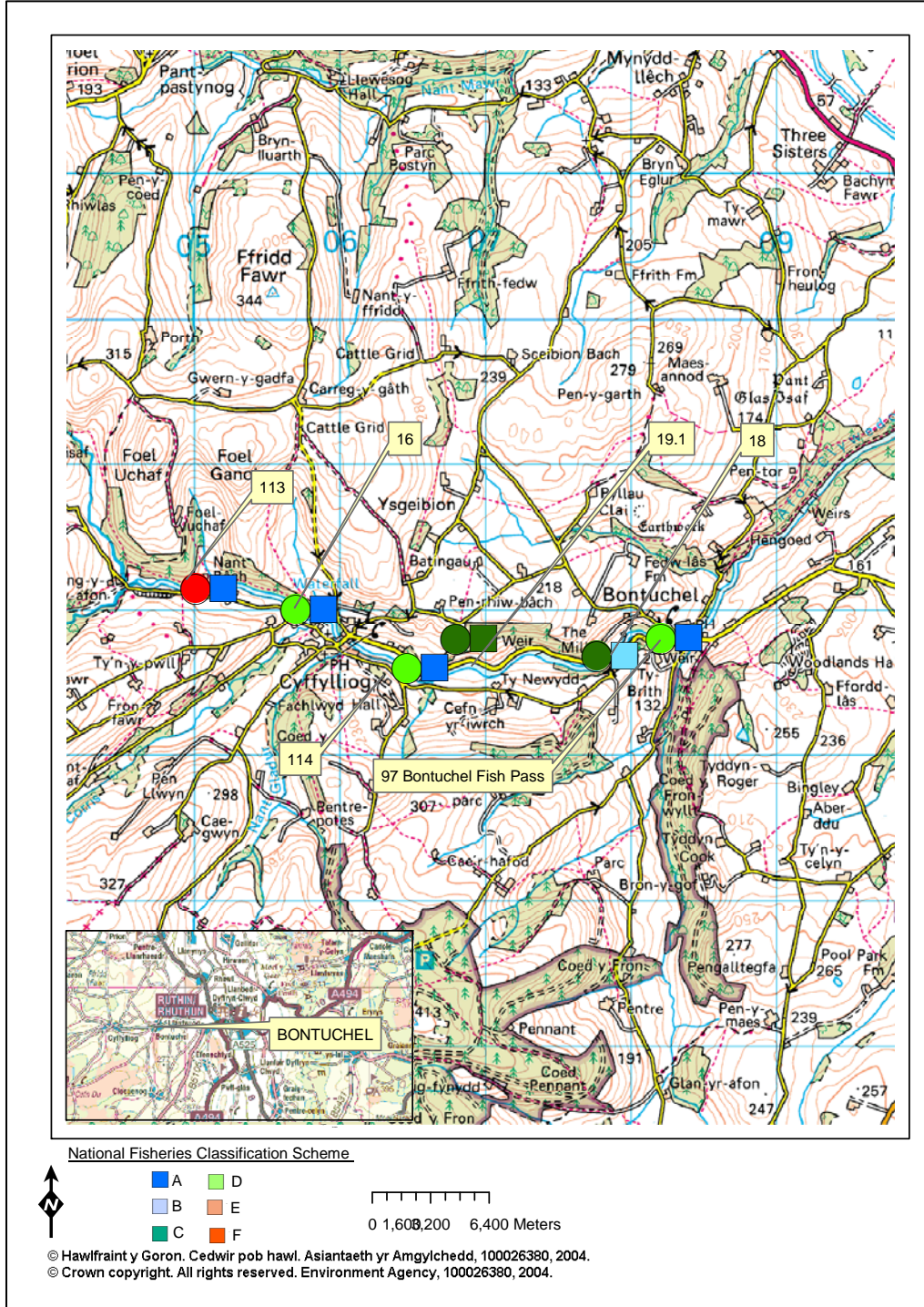
floodline

08456 988 1188



# KNOW YOUR RIVER

## 2009 Clwyd summary





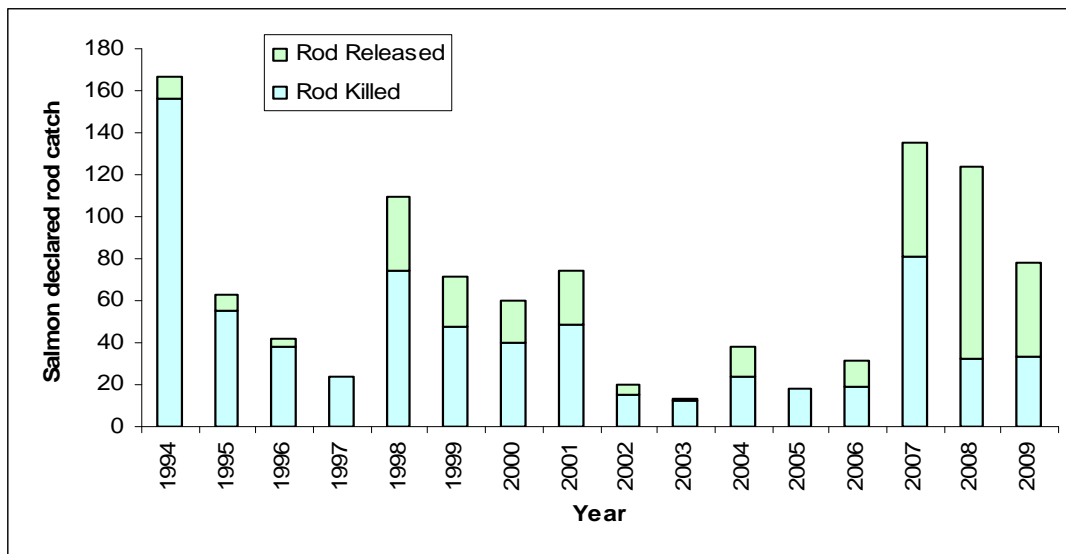
# KNOW YOUR RIVER

## 2009 Clwyd summary

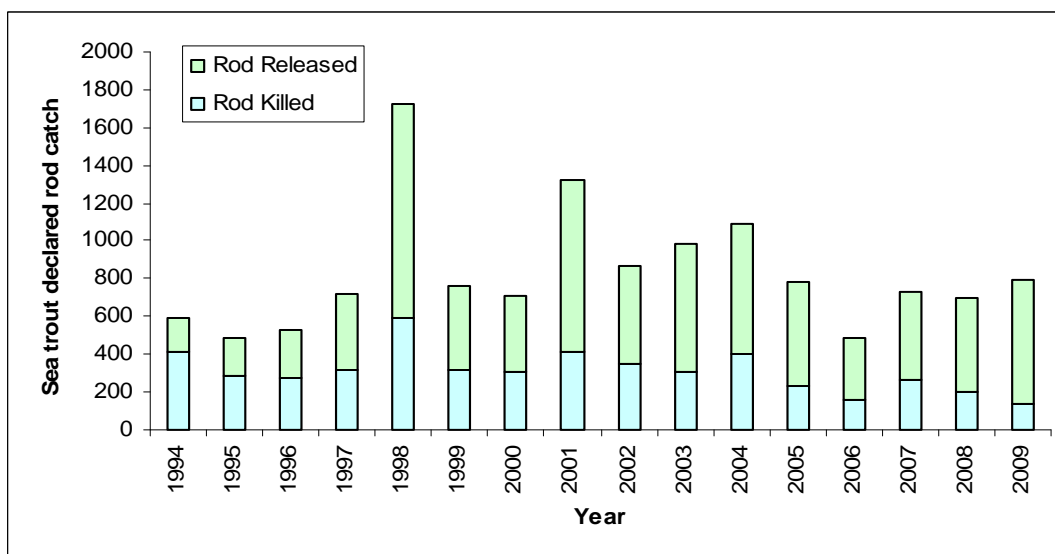
### Catch returns / catch & release

The graphs show the rod catch and catch & release rate for salmon and sea trout on the Clwyd.

**Salmon rod catch** – release rate in 2009 was 58%. This is very good and can hopefully be improved further. The North Wales average is 41%.



**Sea trout rod catch** – release rate in 2009 was 83%. This is excellent and will hopefully continue. The North Wales average is 66%.

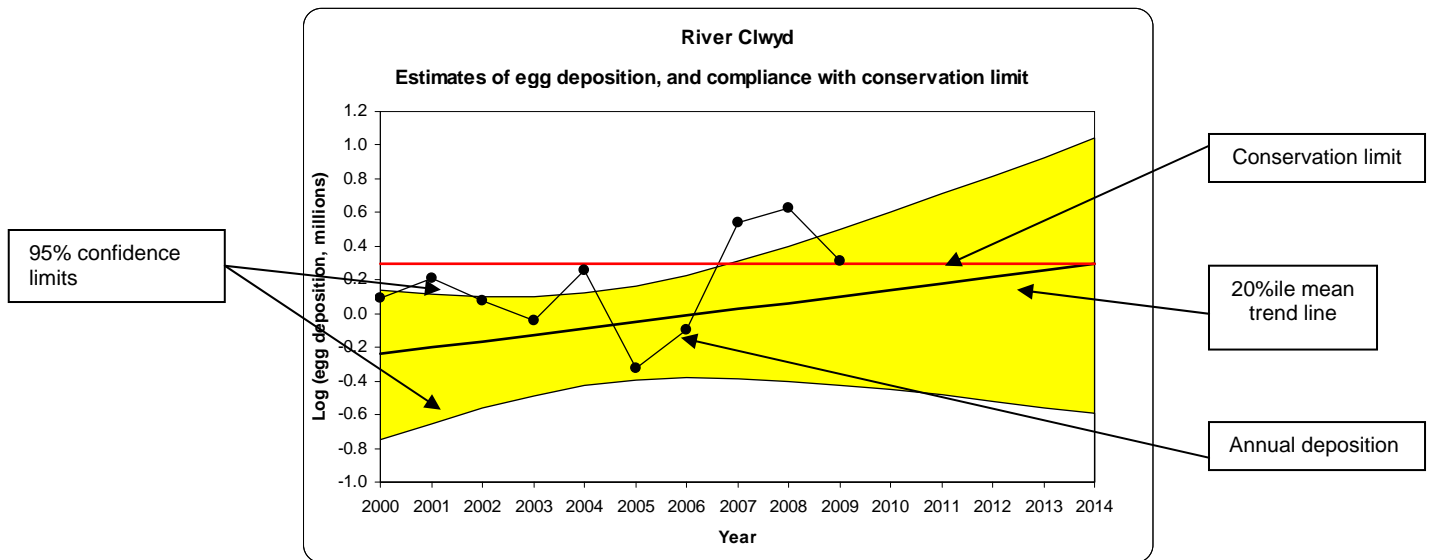




# KNOW YOUR RIVER

## 2009 Clwyd summary

### Conservation of Salmon



Are enough salmon eggs being deposited to conserve salmon stocks in the catchment?

The red line represents the number of eggs required to be deposited to sustain a healthy salmon stock.

- Current number of eggs being deposited puts stocks **probably at risk**.
- In 5 years time the predicted status of salmon stocks will be **probably at risk**.
- Based on current and future trends the stocks of salmon will continue to **improve**.

**Note: this method of stock assessment is currently under review and will change in 2011 due to a changes in effort.**



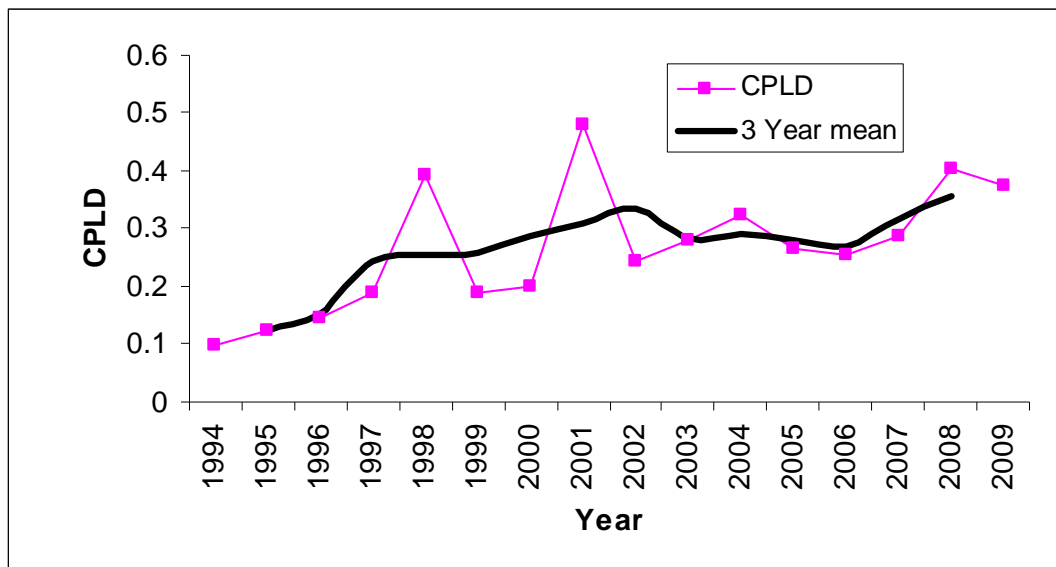
# KNOW YOUR RIVER

## 2009 Clwyd summary

### Conservation of Sea Trout

This approach to assessing sea trout stock performance is still under development. It gives an early warning about potential problems and assists Areas with considering whether any further management action including exploitation controls are required. It is based on catch trends in the last three years compared with those in the previous ten.

Catch Per Unit Effort (CPUE) gives you the catch per outing. This is calculated according to data supplied by anglers on the catchment.



- **CPUE** - on the Clwyd is **stable**.
- **Stock status** – this is comparing catches when they were at there best. Status is **currently between 50 – 80%** of this.
- **Score** – this gives a score from the CPUE and stock status. The Clwyd scores 3, this is **probably not at risk**.



# KNOW YOUR RIVER

## 2009 Clwyd summary

### Salmon Action Plan Activities

Activity	Action
Activities that will occur with or without a River Basin Management Plan RBMP	
Clwyd Catchment Initiative - Key catchments included the Wheeler, Bach, Ystrad, Elwy, Gallen, Hesbin and Dwr Ial.	Pollution prevention visits to DCWW and private Sewage Treatment Works, caravan sites and farm visits.
Survey of juvenile salmonids as part of Clwyd Catchment Initiative Scheme which are additional to routine monitoring.	Additional sites completed.
Review existing fishing byelaws and bait restrictions.	In current discussions about the future.
Improve catch and release and catch returns.	Clwyd federation have worked to improve catch & release and catch returns. Continue the good work.
Carry out biological and fishery surveys on the Wheeler and Ystrad to investigate poor juvenile salmonid survey results.	Surveys have been carried out under WFD.
Maintenance of Bontuchel fish pass and carry out improvements to ensure effective functioning.	Work has been carried out to improve flow direction in and out of the pass.
Ongoing monitoring of juvenile salmonids at Bontuchel sites.	Monitoring will now cease as we have evidence that fish are migrating through the pass.
Improve passability at Ruthin weir.	New fish pass installed at Ruthin weir.
Establish Clwyd Riverfly Partnership initiative.	Federation need to work with the environment agency.
Sustainable fisheries project – Hesbin – buffer strip.	Work has been carried out to create buffer strips.
Sheep dip monitoring on Clwyd tributaries.	No sheep dip was found.
Actions that may happen in the future with more evidence	
Investigate reports of water quality problems on the Clwyd at Bodfari.	Need more information.
Further investigation into reports by anglers of low flow on the Aled and Elwy. Study historic data to see if there is a change in seasonal flow patterns.	Has been investigated previous. Is this an essential piece of work?
Inspect and prevent bank erosion at Pont Dafydd.	Need more evidence of impact.
Investigate reports of Siltation at Bodrhyddan beats.	Need more evidence of impact.
Eradication programme of Himalayan Balsam at Glan llyn.	Eradication programme can be set up through the federation.
Carry out works to ease barrier at Rhyd y Cilgwyn/ Lady Baggots drive weir.	Work to be carried out in 2011.
Negotiate removal of obstruction on the River Wheeler at Afon Wen.	On-going negotiations.
Investigate impacts of piscivourous birds.	Will need to be carried out by the federation.